

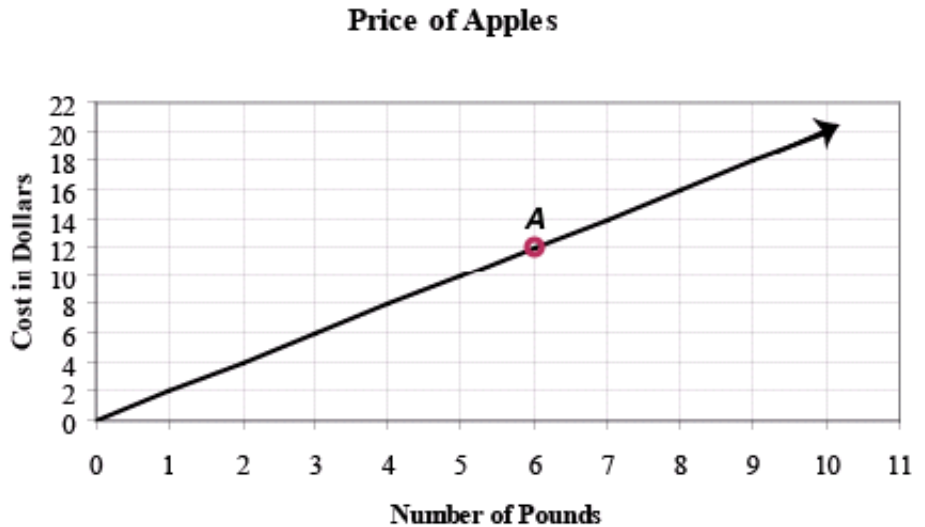
QUIZ #6

Writing Equations

Construct Models = _____ = Critical Thinking
 Communicate Reasoning = _____ = Creativity
 Concepts & Procedures = _____ = Collaboration

Construct Models

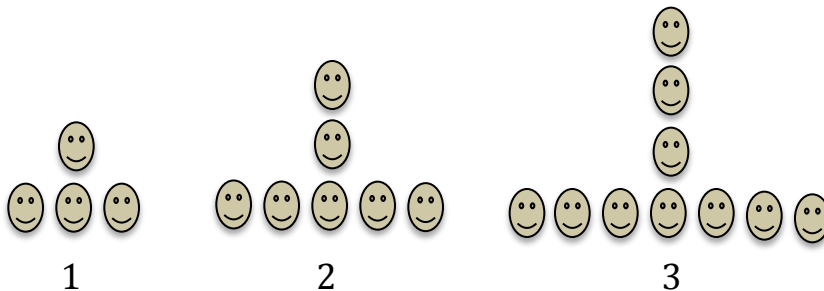
1-3). The following graph shows $C(p)$ which represents Cost (in dollars) for Apples (in pounds).



1. What is the price per pound? _____
2. What is $C(4)$? _____
3. For what value of p , is $C(p) = 18$? _____

Communicate Reasoning

4. Explain how you would determine the 100th case of this smiley-face pattern.

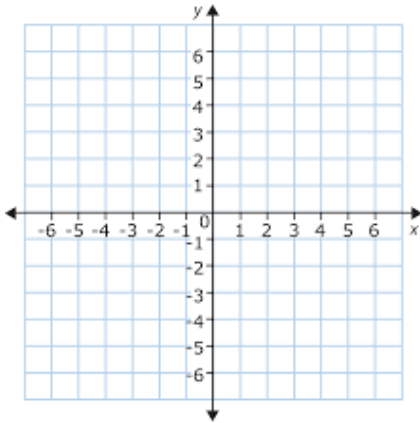


Concepts & Procedures

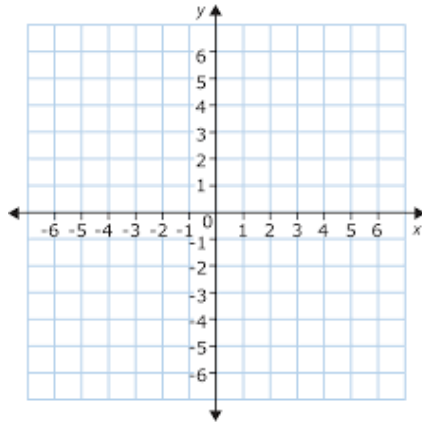
5. For $f(x) = 5x + 7$, find $f(-4)$.

6-8) Graph each equation

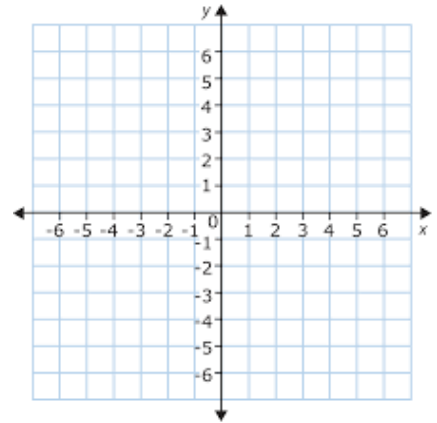
6. $y = 2x - 1$



7. $y - 1 = 3(x + 1)$



8. $2x + 3y = 12$



9. Given the point $(3, 4)$ and a slope of 2, write an equation in point-slope form.

10-11) Convert the following equations to slope-intercept form.

10. $y - 3 = -2(x - 5)$

11. $4x + 3y = 24$

Critical Thinking

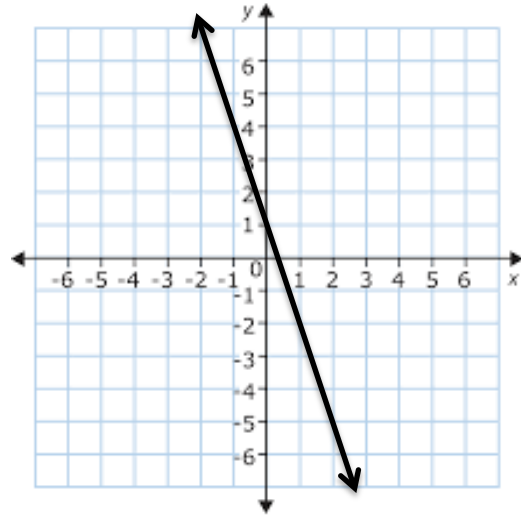
12-15) What is the rate of change (slope) and initial value (y-intercept) of each representation.

12. $f(x) = 2x + 1$

$m = \underline{\hspace{2cm}}$

$b = \underline{\hspace{2cm}}$

13.



$m = \underline{\hspace{2cm}}$

$b = \underline{\hspace{2cm}}$

14.

x	f(x)
2	1
0	4
-2	7
-4	10

$m = \underline{\hspace{2cm}}$

$b = \underline{\hspace{2cm}}$

15. Jasmine has \$10 and earns \$12/hr.

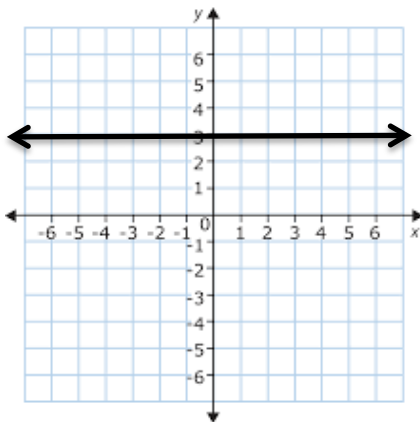
$m = \underline{\hspace{2cm}}$

$b = \underline{\hspace{2cm}}$

16-18) For each graph write the equation and the slope.

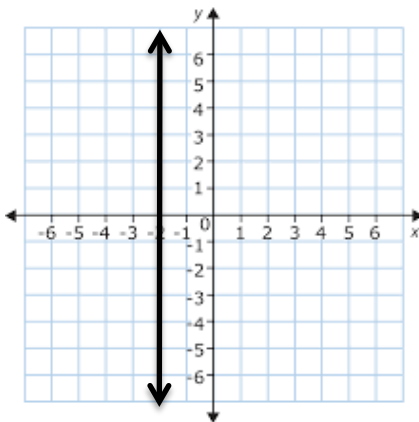
16. _____,

$m = \underline{\hspace{2cm}}$



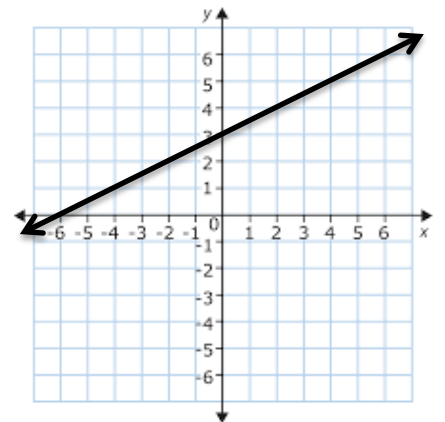
17. _____,

$m = \underline{\hspace{2cm}}$



18. _____,

$m = \underline{\hspace{2cm}}$



Creativity

19. Write an equation in any form. Then write a point that is a solution and another one that is not a solution. Verify each.

Equation: _____

Solution: (,)

Non-Solution: (,)

20. Write a scenario that may be represented by the graph below. Include significant values and rates.

